

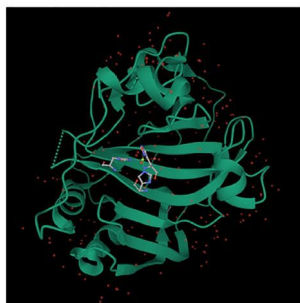
- Collaborative, community-based web portal of human saliva proteins identified by high-throughput proteomic technologies
- Developed for the research community to harness the knowledge in the data and to further enhance the value of the proteome
- **Growing database:** new data, new interfaces, new protein annotations based on published saliva proteome studies and up-to-date protein reference records
- Not just a repository, but a **curated interface** platform for the community, and anybody interested in saliva science, based on a WIKI principle

UniProt Accession	Gene Symbol	Protein Name <small>(Proteins with 3D structures are in bold)</small>	Evidence <small>[Filters - off]</small>					
			Expert Opinion	MS			IHC	mRNA
				Ws	Par	Sub B		
P01034	CST3	Cystatin-C	✓	 				
P01036	CST4	Cystatin-S	✓	 				
P01037	CST1	Cystatin-SN	✓	 				
P02808	STATH	Statherin	✓	 				
P02810	PRH1 PRH2	Salivary acidic proline-rich phosphoprotein 1/2	✓	 				
P02812	PRB2	Basic salivary proline-rich protein 2	✓	 				
P02814	SMR3B	Submaxillary gland androgen-regulated protein 3B	✓	 				
P04280	PRB1	Basic salivary proline-rich protein 1	✓	 				
P05109	S100A8	Protein S100-A8	✓	 				
P06870	KLK1	Kallikrein-1	✓	 				

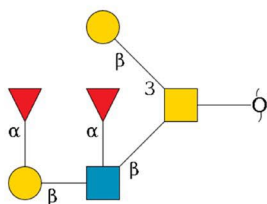
Protein catalog table that depicts different types of experimental and editorial evidence available in support of existence in saliva

Features available for Human Salivary Proteome Wiki users

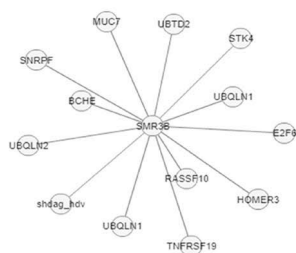
A 3D Structure Prediction & Visualization



B Glycan Structure Diagram



C Protein-Protein Interactions



D Gel Image Visualization and Annotations



E Differential Analysis Heatmap

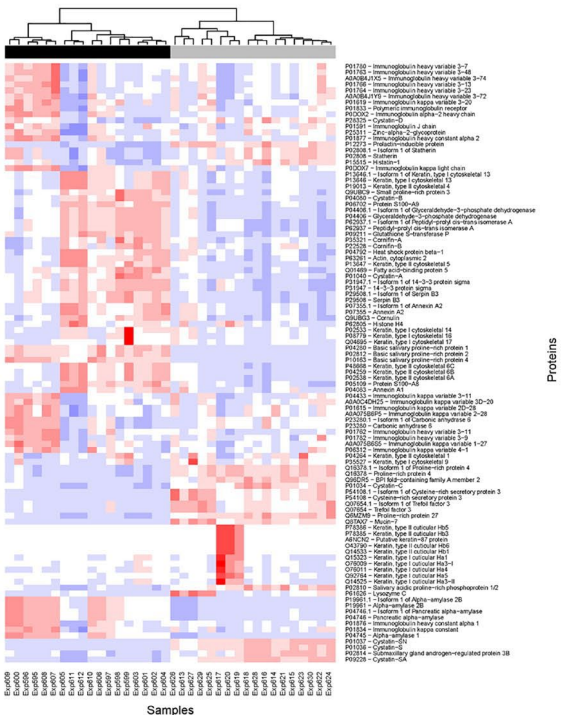


Figure adapted from Lau et al JDR (2021)

Visit salivaryproteome.org

- Browse the Wiki to explore saliva proteome
- query available data,
- perform comparisons of data sets
- Annotate existing protein entries using a simple, intuitive interface
- share your 2D gels and mass spec data
- give your thoughts in discussions
- tell us how we can improve
- Subscribe to the mailing list
- Contact directly through the site

NIDCR Contact:
 Preethi Chander, PhD
 Director, Salivary Biology and Immunology Program
 Division of Extramural Programs
 National Institute of Dental and Craniofacial Research, National Institutes of Health
 Phone: (301) 827-4620
 E-mail: Preethi.Chander@nih.gov

Supported by R01-DE016937 from the National Institute of Dental and Craniofacial Research